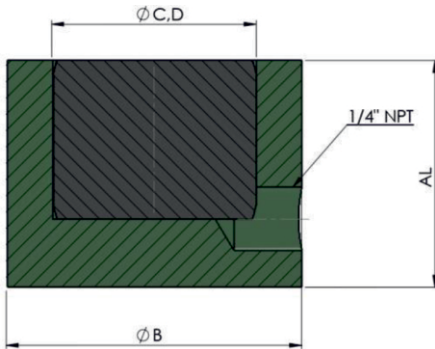


# PVPS

## Planet Very Small Plain Ram Load Return - Single Acting



### APPLICATION

These are designed specially where space is a constraint. Ideally used where no other Jack will fit for lift.

### ADVANTAGES / FEATURES

- Used in complex areas, low clearance extremely.
- Compact Designed, Heat treated alloy steel body for long life.
- High Pressure Working Oil Seals are used.
- Port Size 1/4 " NPT for lower range, 3/8" NPT for higher range.
- Ideally suited for precision lifting, alignments of machinery, Heavy Structures and removal of pulleys/sprockets on taper seats.
- Ensure no gap between Jacks & Load to be lifted, to utilize full stroke of 10 mm.
- Customized Tonnage and Strokes are manufactured as per customer requirement.
- Capacity and Stroke specified are under safety factors.
- While using please read the instructions / manual.



**PVPS Series** - P: Planet, V: Very small, P: Plain Rod, S: Single acting load return, 10: Capacity - ton, 10: Stroke - mm.

Model	Cap. in (ton)	Cap. in (kN)	Stroke in (mm)	"A" Close Height	Effective area in (cm <sup>2</sup> )	Oil Cap in (cc)	"B" Cylinder OD	"C" Cyl Bore ID	"D" Ram dia.	wt. Approx in kg
PVPS 10-10	10	111	10	30	15.9	16	80	45	45	1.2
PVPS 20-10	20	218	10	35	31.2	32	100	63	63	2.1
PVPS 30-10	30	309	10	40	44.2	44	110	75	75	3.0
PVPS 50-10	50	550	10	50	78.5	79	140	100	100	6.0
PVPS 100-10	100	1078	10	70	153.9	154	180	140	140	14.0
PVPS 150-10	150	1589	10	75	227.0	227	220	170	170	22.50
PVPS 200-10	200	2200	10	80	314.2	315	255	200	200	34
PVPS 300-10	300	3167	10	90	452.2	453	310	240	240	54.0

### NOTE:

- ½ mtr. length hose pipe with end fittings provided for PVPS 10-10.
- Due to designed compact or complex there is no top nut to stop stroke limit of ram, someone has to monitor the stroke while lifting, since there would be a chance of ram coming out from jack or cylinder, which would cause in a surprise accident and failure of jack. Place a rigid base below the jack.

- Specifications are subject to change due to continual improvement.
- Higher capacity and customized solution on request.
- Capacity and Stroke specified are maximum safe limits. Use at 80% of rating as safe practice.

